



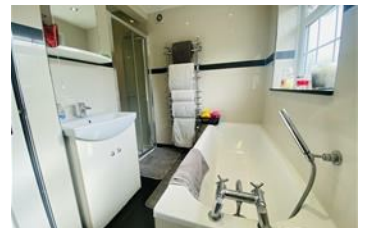
Quixote Crescent, Frindsbury ME2 3XB

£350,000



VIEWING SLOTS FULLY BOOKED on this much improved 3 bedroom semi detached house in Frindsbury. Located in a popular residential area and within walking distance to the train station, local shops and good schools, this surely should tick all your boxes for your next home. Being well presented at first sight, with handy side access and a block paved drive to the front, you will never have to worry about parking. Internally you enter via a hallway with stairs to the first floor and a door to the spacious lounge/diner with double aspect windows. The modern fitted kitchen over looks the rear and offers plenty of storage space with an integrated hob, microwave and oven. This home even comes with a much sought after utility room, housing an integrated washing machine, further storage and the combination boiler plus a door to the side of the property. Upstairs the property boasts 3 bedrooms and a family bathroom with a bath and separate cubicle shower. The sunny rear garden is just perfect for entertaining children and guests during the summer months, offering a decked area plus a lawn area and a brick built shed. We welcome your call to book your internal viewing.

Council Tax Band D



159 High Street, Strood, Rochester, Kent, ME2 4TH

Tel: 01634 735335 Email: justine@medwaymortgageshop.co.uk www.medwaymortgageshop.co.uk